

# GRIZZLY GROWL



## On The Horizon

More on page 2!

- Feb 5-9 Candy Grams for sale
- Feb 7/9 TeleMiracle Sundaes
- Feb 9 SLC Decades Day
- Feb 13 100 day & Free Pancake Lunch
- Feb 14 Valentine's Day / SLC Pink & Red Day
- Feb 15 Oratory & Dessert Potluck
- Feb 16 SCC Hot Lunch
- Feb 19-23 No School WINTER BREAK!
- Feb 28 Pink Shirt Day
- Feb 29 Kinosoo Ski Trip

## Where To Find Us

School Website:  
[www.nwsd.ca/school/greenacre](http://www.nwsd.ca/school/greenacre)

School Facebook:  
[www.facebook.com/greenacreelementary](http://www.facebook.com/greenacreelementary)

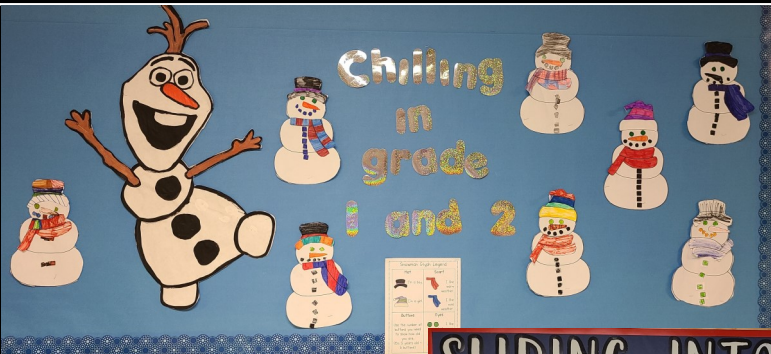
Division Website:  
[www.nwsd.ca](http://www.nwsd.ca)

SARCAN Drop & Go (benefits the SLC):  
Green Acre Grizzlies

## Get In Touch

School e-mail  
[ga.school@nwsd.ca](mailto:ga.school@nwsd.ca)

Front desk phone  
(306) 236-5905

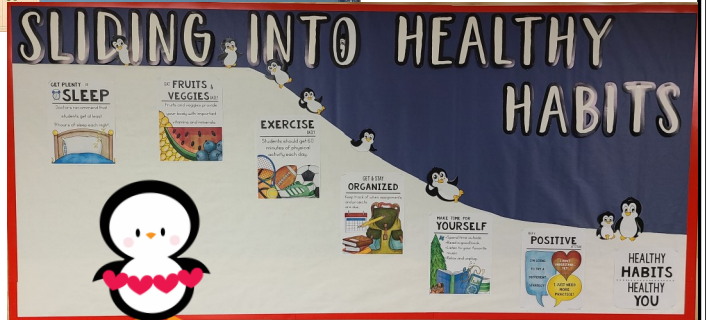


Surrounding: Green Acre is fortunate to have such great student artists to share their creations in our hallways!



## February is I Love to Read Month!

Students will be participating in fun class and school-wide activities all month to celebrate reading!



Mrs. Hildebrand is looking to restock her store!



If you have any gently used small toys, stuffies, games, etc., she would love to take them off your hands!

## TeleMiracle 48

### February 24th and 25th

TeleMiracle 48 will air on CTV beginning at 9pm on Saturday, February 24th, ending at 5pm on Sunday, February 25th, or you can stream the program online at [telemiracle.com](http://telemiracle.com).

The Kinsmen Foundation uses contributions made to provide specialized medical equipment, mobility aids, and medical travel assistance to people in our province!



# Upcoming Events

- Feb 5-9 **Candy Grams** - All week the Student Leadership Council will be selling personalized Candy Grams during the lunch hour for \$1 each. All proceeds will be donated to TeleMiracle!
- Feb 7 & 9 **TeleMiracle Sundaes** - Ms. Bellegarde's class will be serving up sundaes for \$3 on Wednesday and Friday this week!

**PLEASE NOTE:**

All Candy Gram and/or Sundae purchases can be made at the school by cash or cheque, or online with School Cash Online beginning February 5th.

- Feb 9 **SLC Decades Day** - Dress up as your favorite character from the past!
- Feb 13 **SLC 100 Day & Pancake Lunch** - To mark the 100th day of the school year, the SLC will be providing a free Sausage and Pancake Lunch for all students.
- Feb 14 **Valentine's Day / SLC Pink & Red Day**
- Feb 15 **Oratory and Dessert Potluck (1pm @ Rec Centre)** - Our SLC will be holding Oratory with a Dessert Potluck/Contest in lieu of selling TeleMiracle hands. How does it work? Bring a nut-free dessert to the event and the community will vote for their favorite dessert by way of donations to TeleMiracle! While the tasty treats are enjoyed, Green Acre Students will provide entertainment with speeches, readings, and recitations! The best dessert will be determined by the highest amount of donations and will win...

**Epic Bragging Rights!!!**

- Feb 16 **Hot Lunch** - Our SCC will be providing a hot mac and cheese lunch for all students!



Feb 19-23 **WINTER BREAK!**

- Feb 29 **Kinosoo Ridge Ski/Snowboarding Day** - We are looking forward to a great day of Skiing and/or Snowboarding with our Grade 3-8 students. Please be sure to get your consent forms and payments into the school prior to February 15th. Payment can also be made with School Cash Online.

## Volunteers Requested!

Green Acre School is looking for people that would be interested in listening to our students read.



If you are willing or able to come into the school for about an hour a day on Mondays, Tuesdays, Thursdays, and Fridays, or once a week, or any day you are available, please let us know!

We greatly appreciate all our community helpers!



### Looking for...

...Used greeting cards from any occasion to be repurposed for art projects.

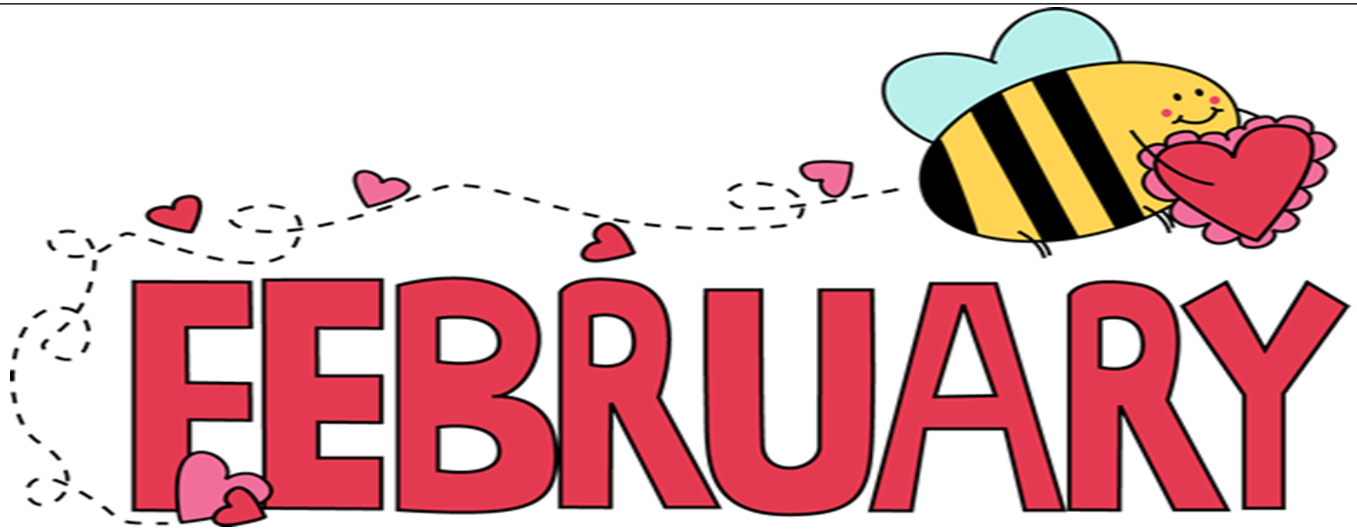
Only the front covers are needed so the backs can be torn off. Please send donations to the school.

Thank you!





# Wellness Corner With Mrs. Klassen



Love is in the air!

**W**hy not use Valentine's Day as a wonderful opportunity to remind our students about the importance of kindness and empathy. This month, we will focus on the theme "Love One Another," encouraging students to practice acts of kindness both inside and outside the classroom. Staff will engage students in discussions about what it means to be a good friend and how we can create a supportive and caring school community.

## KINDNESS

**P**arents, we invite you to reinforce these values at home by discussing the significance of empathy and kindness with your children. Encourage them to share stories of positive interactions they've had and remind them that even small acts of kindness can make a big difference. We value your involvement and support in creating a positive and enriching learning environment for our students.



## EMPATHY

**L**et's make February a month filled with love, kindness, and positive connections!

# FEBRUARY

| SUNDAY            | MONDAY                                   | TUESDAY   | WEDNESDAY                                   | THURSDAY                                 | FRIDAY  | SATURDAY          |
|-------------------|--|---|---|--|---|-------------------|
|                   |  |   |   | 1 K Day                                  | 2   | 3                 |
| 4                 | 5 K Day<br>\$1 Candy Grams<br>All week → | 6   | 7 K Day<br>\$3 TeleMiracle Sundae           | 8  | 9 K Day<br>\$3 TeleMiracle Sundae<br>Decades Day                          | 10                |
| 11                | 12                                       | 13 K Day<br>100 DAYS OF SCHOOL<br>SLC Hot Lunch | 14<br>Happy Valentine's Day<br>Pink/Red Day | 15 K Day<br>Oratory &<br>Dessert Potluck | 16<br>SCC Hot Lunch   | 17                |
| 18                | 19                                       | 20 K Day  | 21<br>WINTER BREAK<br>                      | 22 K Day                                 | 23  | 24<br>TeleMiracle |
| 25<br>TeleMiracle | 26 K Day                                 | 27  | 28 K Day<br>Pink Shirt Day                  | 29<br><br>Kinsoo Ski Trip                | **<br>Don't forget to get those permission forms in prior to February 15! |                   |