

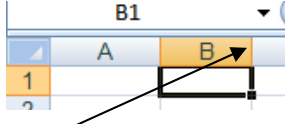
Excel Assignment #1

Grey Cup Champions

Computers 8/9

	A	B	C	D
1				
2				
3	1989	Saskatcl	Hamilton	43-40
4	1991	Toronto	Calgary	36-21
5	1992	Calgary	Winnipeç	28-10
6	1993	Edmontc	Winnipeç	33-23
7	1994	British C	Baltimor	26-23
8	1995	Baltimor	Calgary	37-20
9	1997	Toronto	Saskatcl	47-23
10	1998	Calgary	Hamilton	26-24
11	1999	Hamilton	Calgary	32-21
12	2000	British C	Montreal	28-26
13	2001	Calgary	Winnipeç	27-19
14	2002	Montreal	Edmontc	25-16
15	2003	Edmontc	Montreal	34-22
16	2004	Toronto	British C	27-19
17	2005	Edmontc	Montreal	38-35
18	2006	British C	Montreal	25-14
19	2008	Calgary	Montreal	22-14
20	2009	Montreal	Saskatcl	28-27

- Go to Mr. Walso's website and find the file **A1 Grey Cup Champions Data**. Open the file.
 - Immediately save this file to your Y: drive (your network drive) as **A1 Grey Cup Name** (use your name of course!).


- Here you have a list of all teams that have gone to the Grey Cup since 1989. Unfortunately, you can't really see the names of all of the teams – the columns aren't wide enough. Put your cursor between the B and C and double-click. This should widen the columns. Do the same thing so that you can read the teams in column C.
 

- There are a few years missing. You need to insert some rows and add the following years. Also, you'll need to do some research (maybe) to fill in one missing year.

1990	Winnipeg	Edmonton	50-11
1996	Toronto	Edmonton	43-37
2007	???	???	???

- The first missing year is 1990. Highlight Row 4 by clicking on the 4 in the left column. Now right-click on the highlighted area and choose Insert.
- Enter the information from 1990.
- The next missing year is 1996. Highlight Row 10 and insert a new row. Enter the info from 1996.
- The last missing year is 2007. Use the same steps to add this info.

- The list ends at 2009. Make a prediction about what might happen in 2010 to the bottom of the list.

- In cell A1, type **Grey Cup History**
 - Highlight cells A1 to D1. Choose Merge & Centre from your toolbar. This button looks like this: 
 - Change the font to 18. Bold this title.



	A	B	C	D
1	Grey Cup History			
2	Year	Champion	Runner-Up	Score
3	1989	Saskatchewan	Hamilton	43-40
4	1990	Winnipeg	Edmonton	50-11
5	1991	Toronto	Calgary	36-21
6	1992	Calgary	Winnipeg	28-10
7	1993	Edmonton	Winnipeg	33-23
8	1994	British Columbia	Baltimore	26-23
9	1995	Baltimore	Calgary	37-20
10	1996	Toronto	Edmonton	43-37
11	1997	Toronto	Saskatchewan	47-23
12	1998	Calgary	Hamilton	26-24
13	1999	Hamilton	Calgary	32-21
14	2000	British Columbia	Montreal	28-26
15	2001	Calgary	Winnipeg	27-19
16	2002	Montreal	Edmonton	25-16
17	2003	Edmonton	Montreal	34-22
18	2004	Toronto	British Columbia	27-19
19	2005	Edmonton	Montreal	38-35
20	2006	British Columbia	Montreal	25-14
21	2007			
22	2008	Calgary	Montreal	22-14
23	2009	Montreal	Saskatchewan	28-27
24				

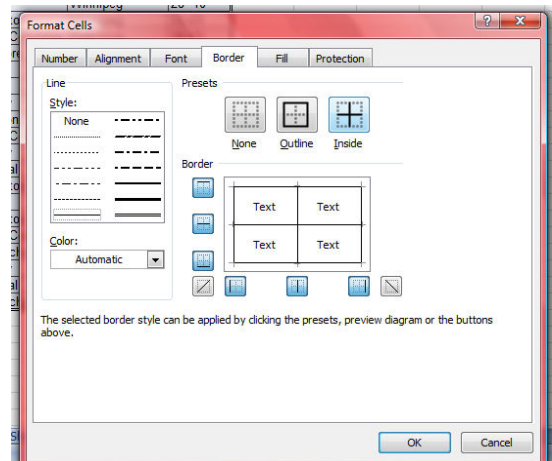
6. Highlight cells A2 to D2.
 - a. Change the font size to 12. Bold it. Centre it.
 - b. In A2, type Year.
 - c. In B2, type Champion.
 - d. In C2, type Runner-Up.
 - e. In D2, type Score.

7. Change the colour of the title in A1 and the headings in A2-D2. Pick any colour that you like, but it must be readable.

8. Centre the scores in column D.

9. Highlight cells A1 – D24 (the whole table). Right-click and choose Format Cells, then click on the Border tab. Click on Outline and Inside to add a border around all of your cells. Click OK.

10. In cell F1, type your name in size 12 font. Change the colour and font to something that represents you!



11. Save the file. Check to see that it looks similar to the spreadsheet on the next page.

12. Hand in your assignment:
- a. Use File, Save As... to save your assignment in Mr. Walso's Inbaskets.
 - b. Print your assignment and hand it in to Mr. Walso

Grey Cup History

John Smith

Year	Champion	Runner-Up	Score
1989	Saskatchewan	Hamilton	43-40
1990	Winnipeg	Edmonton	50-11
1991	Toronto	Calgary	36-21
1992	Calgary	Winnipeg	28--10
1993	Edmonton	Winnipeg	33-23
1994	British Columbia	Baltimore	26-23
1995	Baltimore	Calgary	37-20
1996	Toronto	Edmonton	43-37
1997	Toronto	Saskatchewan	47-23
1998	Calgary	Hamilton	26-24
1999	Hamilton	Calgary	32-21
2000	British Columbia	Montreal	28-26
2001	Calgary	Winnipeg	27-19
2002	Montreal	Edmonton	25-16
2003	Edmonton	Montreal	34-22
2004	Toronto	British Columbia	27-19
2005	Edmonton	Montreal	38-35
2006	British Columbia	Montreal	25-14
2007	Saskatchewan	Winnipeg	23-19
2008	Calgary	Montreal	22-14
2009	Montreal	Saskatchewan	28-27
2010	Saskatchewan	British Columbia	27-13